

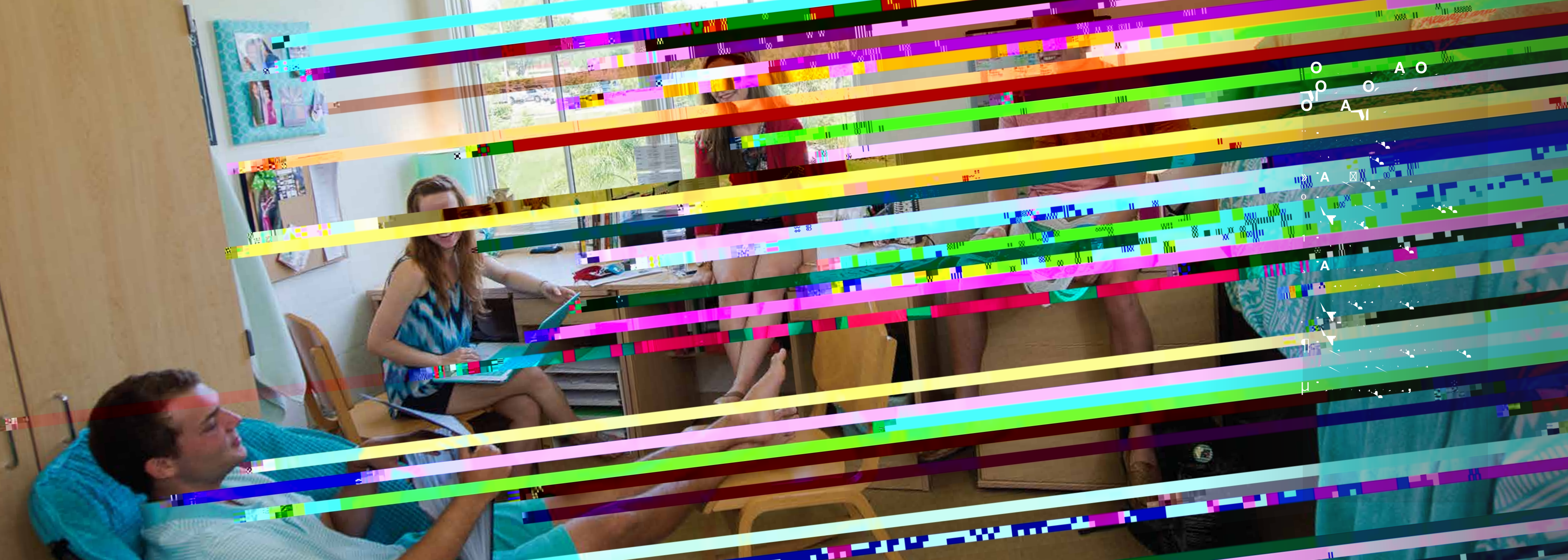


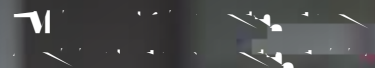
O

A A

Check out your housing options!







living on campus is about learning, growing, and helping you develop to your fullest potential."

— Mike Crawford, Dean of Students



Florida State University is a public research university located in Tallahassee, Florida. It is one of the largest and oldest universities in the state, with a long history of academic excellence and community service. The university is known for its commitment to providing a high-quality education to all students, regardless of their background or financial situation.

Living on campus is a great way to get the most out of your college experience. It allows you to immerse yourself in the university's culture and community, and to take full advantage of the resources and opportunities available. Whether you're looking for a quiet place to study or a vibrant social scene, Florida State has something for everyone.

There are many benefits to living on campus, including the ability to build strong relationships with your peers and faculty, and to gain valuable experience in a real-world setting. Additionally, living on campus can help you save money by reducing the need for transportation and other expenses. Florida State offers a variety of housing options to meet the needs of all students.

Florida State is a residential university, and we encourage all students to live on campus. We offer a wide range of housing options, from traditional dormitories to modern apartment-style living. Our campus is a vibrant and supportive community, and we want to ensure that every student has the opportunity to thrive here.



COMM

OWN A

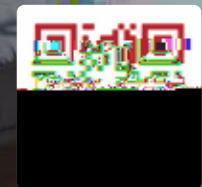
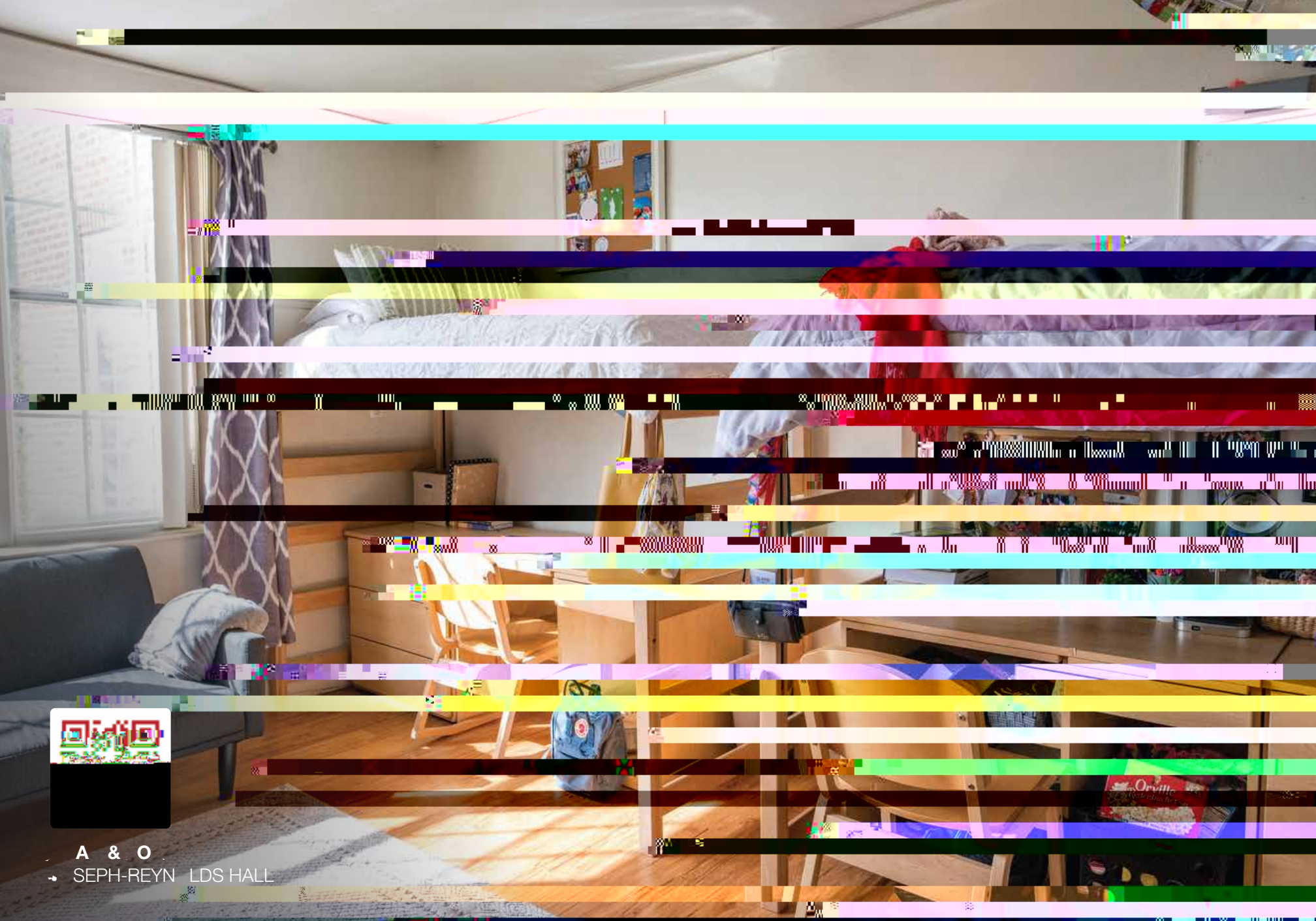
Life at our campus community, will be a
rich and rewarding experience. You'll find
opportunities to learn, grow, and explore.
You'll find plenty of opportunities to
nurture friendships, learn, and explore.
You'll find plenty of opportunities to
nurture friendships, learn, and explore.
You'll find plenty of opportunities to
nurture friendships, learn, and explore.
You'll find plenty of opportunities to
nurture friendships, learn, and explore.
You'll find plenty of opportunities to
nurture friendships, learn, and explore.

Want to learn more about our campus community?
Visit our website at www.oxford.edu

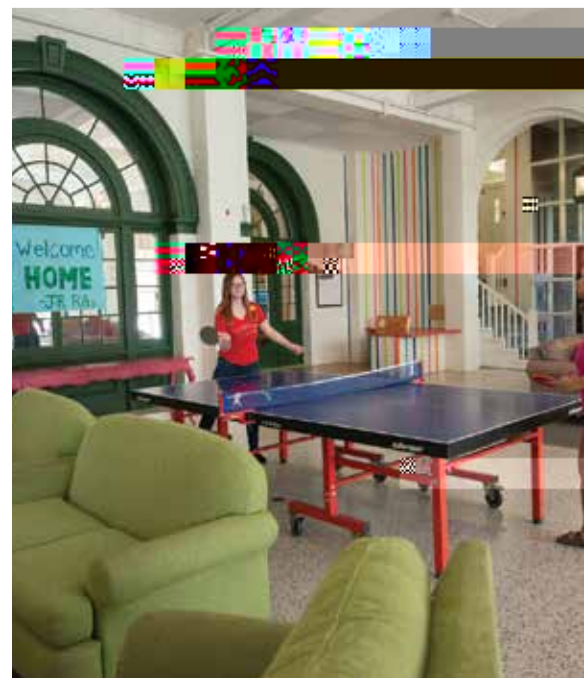
"You'll find plenty of opportunities to nurture friendships, learn, and explore."

Emma Elger, Major, Nursing





A & O
SEPH-REYN LDS HALL



Q U E S T I O N S

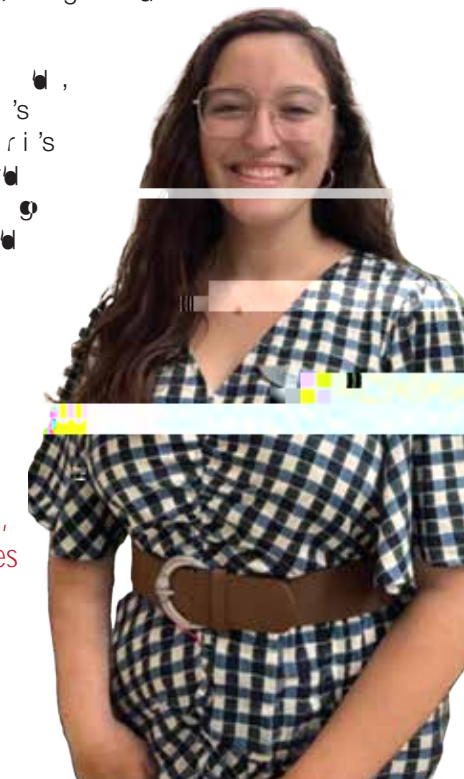
As a resident advisor, you will be responsible for providing support and guidance to your residents. This role is crucial in ensuring a safe and positive living environment. You will be involved in various activities, including organizing events, addressing concerns, and fostering a sense of community. Your responsibilities will also include monitoring the well-being of residents and reporting any issues to the appropriate authorities.

This role offers a unique opportunity to make a difference in the lives of your residents. You will be part of a team that works together to create a supportive and inclusive community. Your role is not just about providing support, but also about being a role model and a source of inspiration for your residents. You will have the chance to build strong relationships and create a lasting impact on the lives of those around you.

Living in a residence hall is a great experience, and being a resident advisor is a rewarding role. You will have the chance to meet and work with people from different backgrounds and cultures. This diversity is one of the strengths of our community, and it provides a rich and dynamic living experience. You will be able to share your own experiences and help others navigate the challenges of college life. Your role is an important one, and we are proud to have you as part of our team.

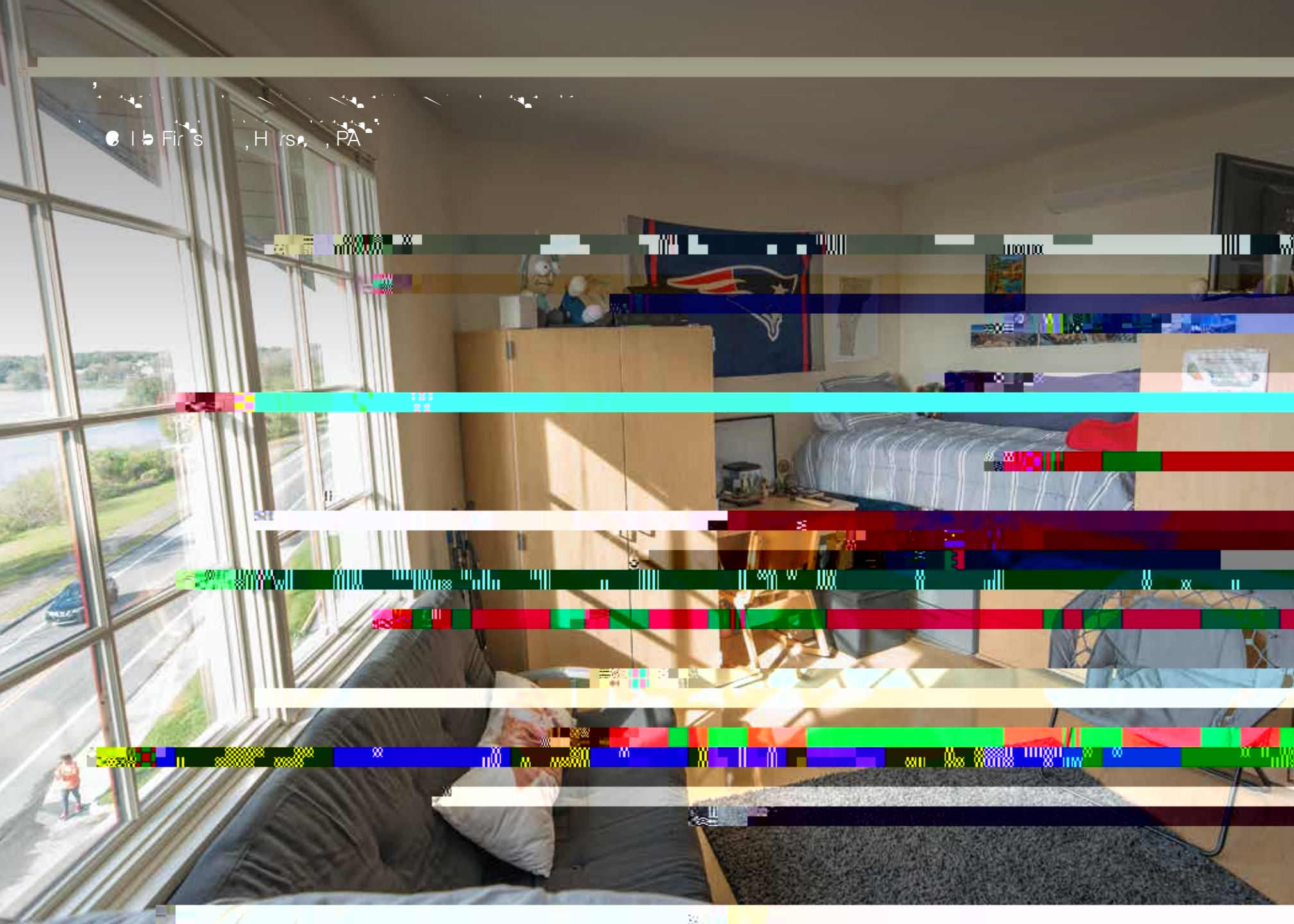
Being a resident advisor in JR is like having a front-row seat to a diverse and dynamic community. Every day brings new opportunities to foster connections, celebrate achievements, and make a lasting impact on the lives of those around me!

Ariana, Florida, FL



A A A

A r s s e r r r r m s e-R l s, 'll i l
r all-mal pi . S e) r s r r i i a r all
s i o similar e m 's r r . Wi e e
is r i r e b i l l e , r m s r r i r l
i l i a l. R m s r m m l e s i g l a l l l e



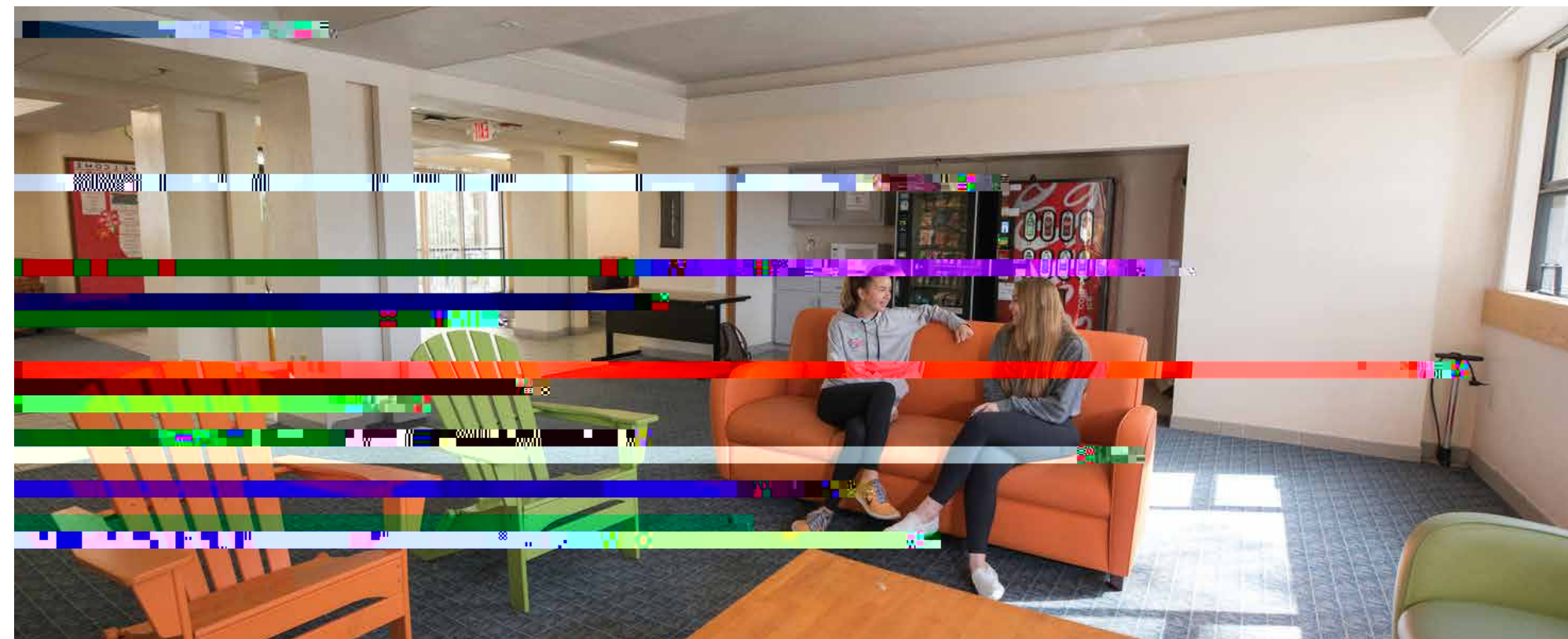
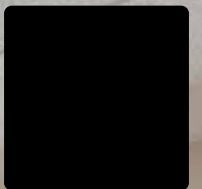
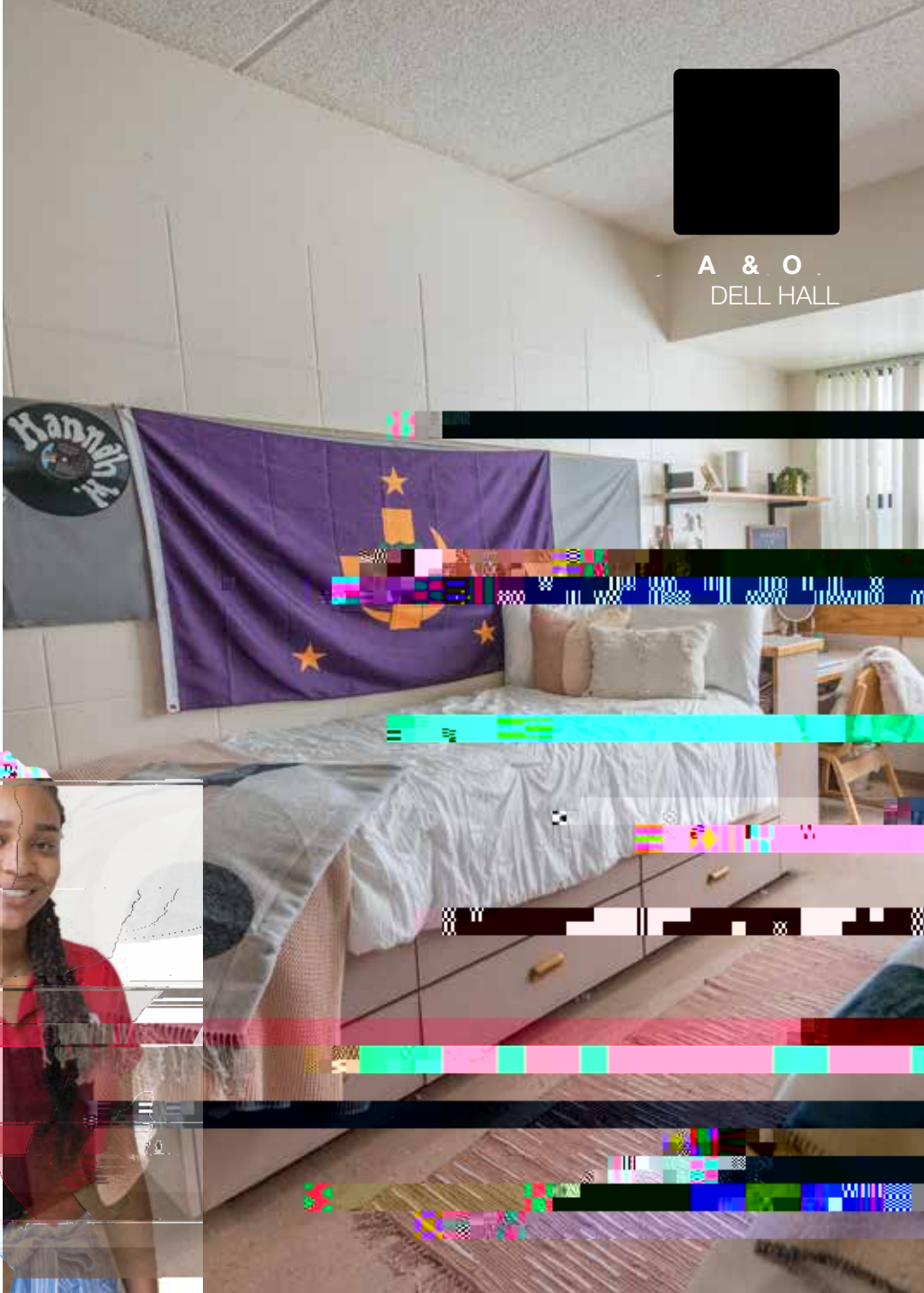
A

● i l l a b i e , r e s i d e n t i a l a r a m p s , D e l l i s a r e b i l i t a t i o n a l l i s i n g u i s t i c a n d a r m s i n r i s i o s b i l i t a t i o n a l i . D e l l i s a m b e r s - a l s o t a r - u s l s s r i g a m m a l a m s e r , a m r e r i b r s i d s D e l l j m r i g e r i r s a m a m a l l m a s .

D e l l H a l l a r s a s a i s l a b i a t a g o s r l i s i , p o - p o a b , a l s o l a b s . T h i s a l l i s l a b i a l l a r a , b e s r , a l o g e r , M M a r , a l W ' s B i s r . l ' s a l j a r r a i p i s , s e a s e , p l , s s r , a l s a l l l a l l r e p i g i s r s i d s a e , r e a i .

"You're immediately more plugged-in to the campus community and have more opportunities to join clubs, attend campus events, meet new people, and develop friendships. Dell residents have a stronger connection to the campus community because they are living in the center of all the action!"

● I l i B u , B r a d , F L





... A O A A ...

H llis a l Mill r, al g i a, a l D ll Hall,
ar ar a ar - blll g m p
ppr lssm l a l a as sid
am ps. H llis Hall is a rbl i al
r sid all a is - l b l r a l
rs l b ar r ms a l

Office of Admissions
111 Lake Hollingsworth Drive
Lakeland, FL 33801-5698
flsouthern.edu

SEE YOU SOON!

